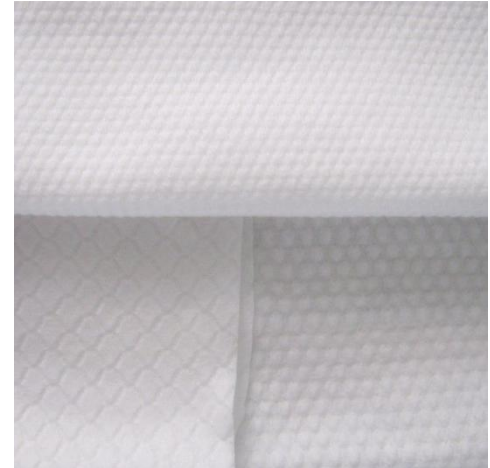




Product Information Sheet

Product Description

Spunlace nonwoven fabric used short staple fibers, the most popular is viscose and polyester staple fibers but polypropylene and cotton are also used. Main applications for spunlace include wipes, facial sheet masks and medical products.



Product Informations:

Color	White
Material	Viscose, polyester, pp, wood pulp, tencel
Weight(gsm)	30 to 120gsm
Width	Machine Width 3.2metre, production width per requestion for different final products
Treatment	Spunlace, straight-laid, cross-laid, semi-cross-laid
Pattern	Plain, mesh, EF embossed, dot, (can do digital printing)
Item	CSU100

Features&Benefits:

- Help to meet regulatory US and European standards
- With a barrier against liquids
- Different levels of performance, customized according to the regulations and desired results
- Absorbent, Breathable, Soft, Skin-friendly, Eco-friendly, Shrink Resistant, Tear Resistant
- Usage for Wipe, Face Mask, Towel, Disposable Items, Cleaning Fabric, Kitchen Fabric, Baby/Adult Diaper, Package, Catering, Home Textile, Sanitary products, Hospital/Medical products